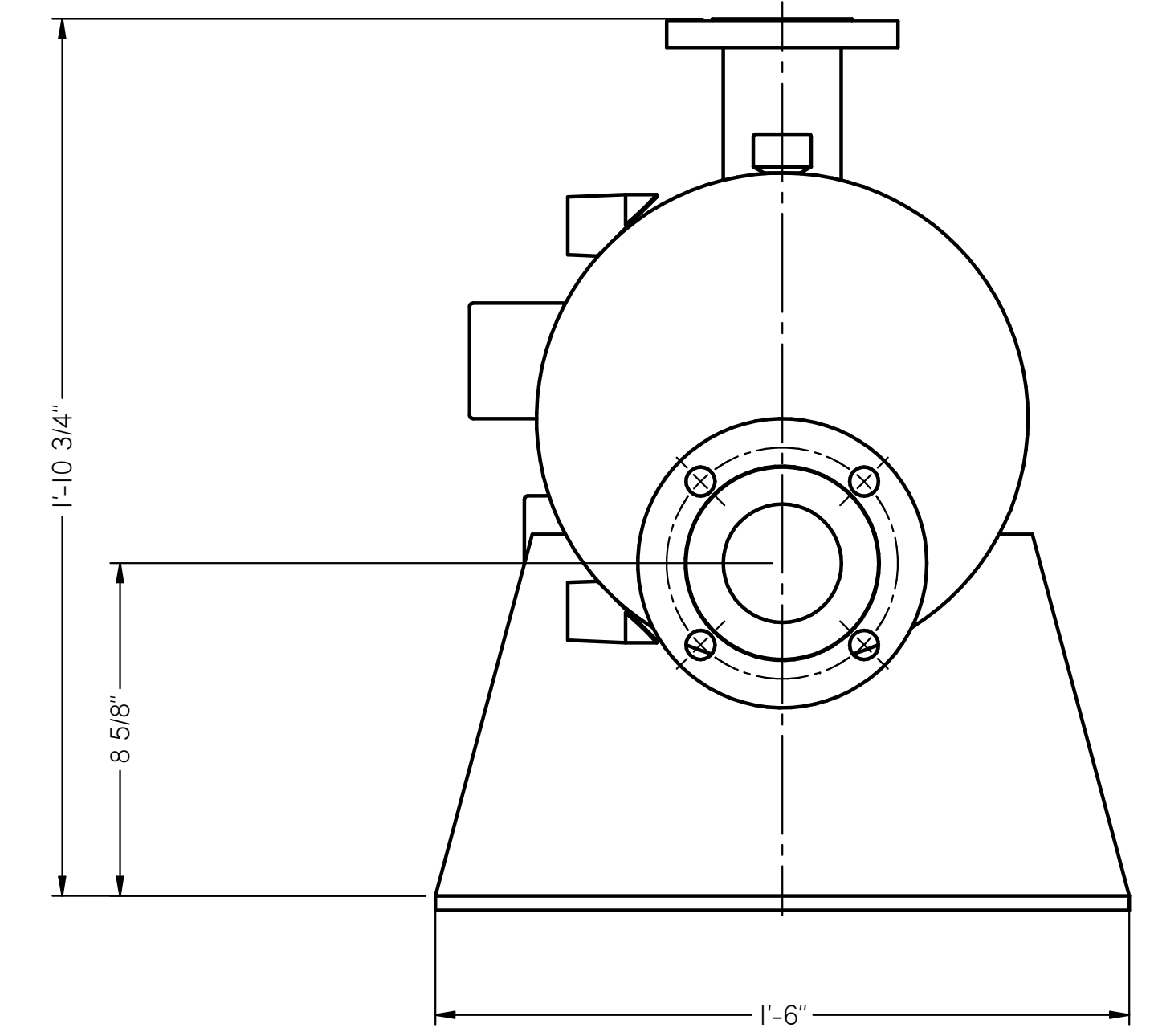
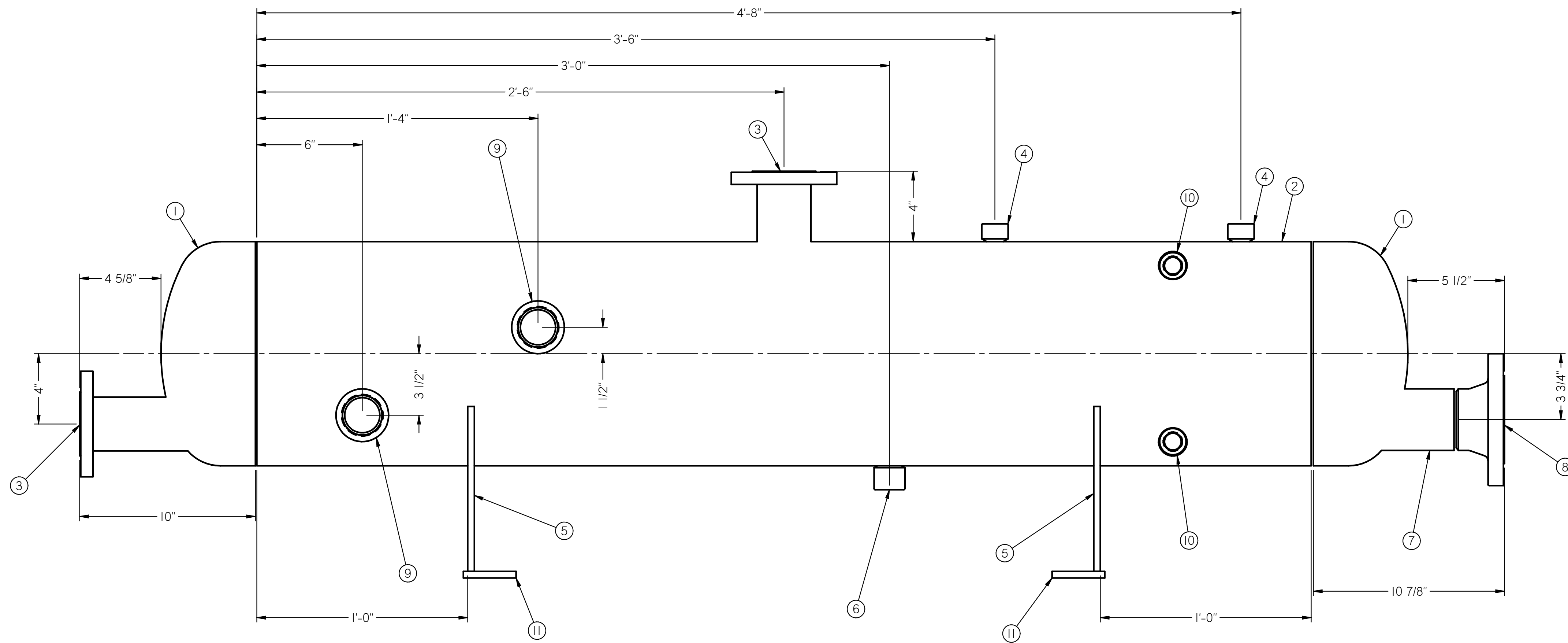


Item	Document Number	Title	Quantity	Material
1	EHD12-328CS	12 3/4" OD x .328" MIN THK 2:1 ELLIPTICAL HEAD	2	Stainless Steel, 316
2		12 3/4" OD x .375 WALL PIPE 5'-0" LG	1	Stainless Steel, 316
3	LWN16-15S472	2" 150# LWN RF FLANGE	2	Stainless Steel, 316
4	CPM6-S4TH3K	3/4" 3000# MACH THD COUPLING	2	Stainless Steel, 316
5		3/8" THK VESSEL LEGS	2	Stainless Steel, 316
6	CPM8-S4TH3K	1" 3000# MACHINED COUPLING	1	Stainless Steel, 316
7	PIP24-STS4S	3" x STD SMLS. PIPE	1	Stainless Steel, 316
8	FLG24-15CSWNST	3" STD RFWN WELD NECK FLANGE	1	Stainless Steel, 316
9	CPF16-CSTH3K	2" 3000# THREADED FULL COUPLING	2	Stainless Steel, 316
10	ELT4-300CS	1/2" 3000# BUTT WELD/THREADED ELBOLET	2	Stainless Steel, 316
11		3/8" THK VESSEL FOOT	2	Stainless Steel, 316



		TULSA, OK ALBANY, GA. P.O. Box 471453 Tulsa, Oklahoma 74147		
		DATE:	SCALE:	DRAWN BY:
		CONDENSATE VESSEL		
CUSTOMER:		ANADARKO		DRAWING NUMBER:
DATE:	REVISION DESCRIPTION:	BY:		